

ELEVATOR BUCKETS

GRAIN BELT

Supply Co., Inc.

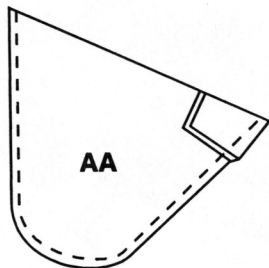
MANUFACTURER OF **SUPERIOR** INDUSTRIAL DUTY
ELEVATOR BUCKETS

SUPERIOR QUALITY

SUPERIOR SERVICE

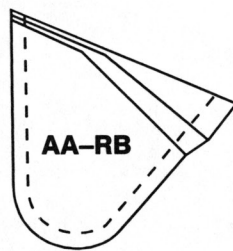
SUPERIOR PRICE

THE **SUPERIOR** LINE, A STYLE FOR ALL APPLICATIONS



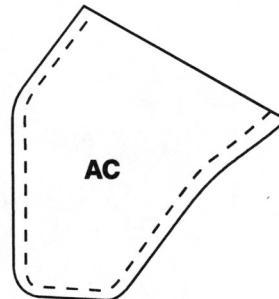
AA

DUCTILE AND NYLON



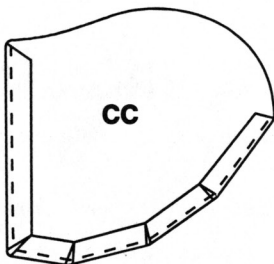
AA-RB

DUCTILE



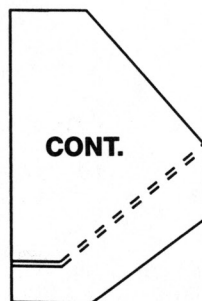
AC

DUCTILE AND STEEL



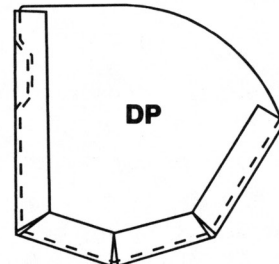
CC

**STEEL, PLASTIC,
STAINLESS STEEL**



CONT.

STEEL AND NYLON



DP

**STEEL AND
STAINLESS STEEL**

PHONE (785) 827-4491
FAX (785) 827-4494

GRAIN BELT SUPPLY CO., INC.

SALINA, KANSAS

U.S. 1-800-255-2742
1-800-432-8292
1-800-447-0522



ELEVATOR BUCKETS

Superior Steel Elevator Buckets

Manufactured by Grain Belt Supply, with years of experience in the grain handling equipment industry.

Grain Belt manufactures the finest grain handling equipment in the country and offers the most comprehensive "after the sale" service anywhere. Any additional information, as well as a free sample, will be promptly furnished upon request. Call us today.



- Recessed bolt hole area for better grip to belt allowing a flatter belt surface
- Slotted bolt holes which fit all standard punching allow faster mounting
- All standard buckets vented for more efficient handling with less turbulence and backlegging
- Made of one-piece welded construction using only top quality prime cold roll steel
- High pressure spot welding for extra strength
- Larger tabs with more welding provide greater strength at stress points when buckets are digging and filling
- Straight sides allow discharge in mass – creating less dust and turbulence
- Designed for use on wide range of belt speeds
- All buckets available with optional reinforcing front lip brace.

Steel buckets also available non-vented. Other options available on request.

PHONE (785) 827-4491
FAX (785) 827-4494

GRAIN BELT SUPPLY CO., INC.
SALINA, KANSAS

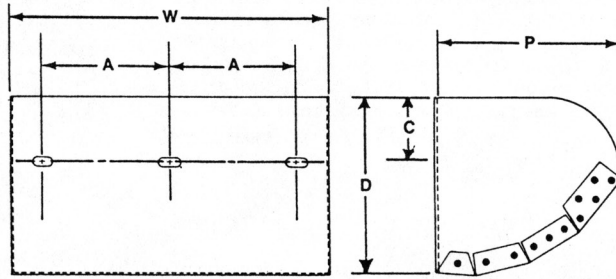
U.S. 1-800-255-2742
1-800-432-8292
1-800-447-0522



ELEVATOR BUCKETS

Superior Metal Buckets

Buckets are vented as standard.
Shaded buckets also stocked nonvented.



Size W x P	Act'l Proj. P	Centers Bolt Holes A	Number Holes	C	D	Bolt Sizes	Gauge	Approx. Weight	Gross Cu. In. Capacity	No. Per Box
4 x 3	3 ³ / ₁₆	2 ¹ / ₂	2	7 ⁷ / ₈	2 ¹¹ / ₁₆	1/4	16	.62	22	84
4 x 4	4 ³ / ₁₆	2 ¹ / ₂	2	1 ³ / ₄	4	1/4	18	.90	39	84
5 x 4	4 ³ / ₁₆	3 ³ / ₁₆	2	1 ³ / ₄	4	1/4	18	.95	52	84
6 x 4	4 ³ / ₁₆	4 ³ / ₁₆	2	1 ³ / ₄	4	1/4	18	1.10	62	84
7 x 4	4 ³ / ₁₆	2 ¹¹ / ₁₆	3	1 ³ / ₄	4	1/4	18	1.25	70	84
8 x 4	4 ³ / ₁₆	3 ¹ / ₁₆	3	1 ³ / ₄	4	1/4	18	1.50	79	84
9 x 4	4 ³ / ₁₆	3 ⁵ / ₈	3	1 ³ / ₄	4	1/4	18	1.70	90	56
6 x 5	5 ¹ / ₄	4 ³ / ₁₆	2	1 ⁷ / ₈	5	1/4	16	1.60	94	54
7 x 5	5 ¹ / ₄	2 ¹¹ / ₁₆	3	1 ⁷ / ₈	5	1/4	16	1.75	110	54
8 x 5	5 ¹ / ₄	3 ¹ / ₁₆	3	1 ⁷ / ₈	5	1/4	16	2.00	125	54
9 x 5	5 ¹ / ₄	3 ⁵ / ₈	3	1 ⁷ / ₈	5	1/4	16	2.50	140	36
10 x 5	5 ¹ / ₄	4 ¹ / ₈	3	1 ⁷ / ₈	5	1/4	16	2.70	155	36
11 x 5	5 ¹ / ₄	3	4	1 ⁷ / ₈	5	1/4	16	2.90	170	36
12 x 5	5 ¹ / ₄	3 ⁵ / ₈	4	1 ⁷ / ₈	5	1/4	16	3.00	185	36
7 x 6	6 ⁵ / ₁₆	2 ¹¹ / ₁₆	3	2 ³ / ₁₆	6	1/4	16	2.85	155	36
8 x 6	6 ⁵ / ₁₆	3 ¹ / ₁₆	3	2 ³ / ₁₆	6	1/4	16	3.10	178	36
9 x 6	6 ⁵ / ₁₆	3 ⁵ / ₈	3	2 ³ / ₁₆	6	1/4	16	3.40	202	24
10 x 6	6 ⁵ / ₁₆	4 ¹ / ₈	3	2 ³ / ₁₆	6	1/4	16	3.50	222	24
11 x 6	6 ⁵ / ₁₆	3	4	2 ³ / ₁₆	6	1/4	16	3.75	244	24
12 x 6	6 ⁵ / ₁₆	3 ⁵ / ₈	4	2 ³ / ₁₆	6	1/4	16	4.00	267	24
13 x 6	6 ⁵ / ₁₆	3 ⁵ / ₈	4	2 ³ / ₁₆	6	1/4	16	4.50	289	24
14 x 6	6 ⁵ / ₁₆	3	5	2 ³ / ₁₆	6	1/4	16	4.75	312	24
8 x 7	7 ³ / ₁₆	3 ¹ / ₁₆	3	3 ³ / ₁₆	7	5/16	14	4.60	242	24
9 x 7	7 ³ / ₁₆	3 ⁵ / ₈	3	3 ³ / ₁₆	7	5/16	14	4.80	276	24
10 x 7	7 ³ / ₁₆	4 ¹ / ₈	3	3 ³ / ₁₆	7	5/16	14	5.00	302	16
11 x 7	7 ³ / ₁₆	3	4	3 ³ / ₁₆	7	5/16	14	5.25	333	16
12 x 7	7 ³ / ₁₆	3 ⁵ / ₈	4	3 ³ / ₁₆	7	5/16	14	6.25	362	16
13 x 7	7 ³ / ₁₆	3 ⁵ / ₈	4	3 ³ / ₁₆	7	5/16	14	6.75	393	16
14 x 7	7 ³ / ₁₆	3	5	3 ³ / ₁₆	7	5/16	14	7.00	424	16
15 x 7	7 ³ / ₁₆	3 ¹ / ₄	5	3 ³ / ₁₆	7	5/16	14	7.50	454	8
16 x 7 *	7 ³ / ₁₆	2 ⁷ / ₈	6	3 ³ / ₁₆	7	5/16	14	8.00	486	8
18 x 7 *	7 ³ / ₁₆	3 ¹ / ₈	6	3 ³ / ₁₆	7	5/16	14	8.50	544	8
20 x 7 *	7 ³ / ₁₆	3 ¹ / ₂	6	3 ³ / ₁₆	7	5/16	14	9.25	605	8
22 x 7 *	7 ³ / ₁₆	4	6	3 ³ / ₁₆	7	5/16	14	10.00	664	8
24 x 7 *	7 ³ / ₁₆	3 ¹ / ₂	7	3 ³ / ₁₆	7	5/16	14	10.75	725	8
9 x 8	8 ¹ / ₈	3 ⁵ / ₈	3	3 ¹ / ₂	8	5/16	14	5.60	349	16
10 x 8	8 ¹ / ₈	4 ¹ / ₈	3	3 ¹ / ₂	8	5/16	14	6.10	388	16
11 x 8	8 ¹ / ₈	3	4	3 ¹ / ₂	8	5/16	14	6.75	427	16
12 x 8	8 ¹ / ₈	3 ⁵ / ₈	4	3 ¹ / ₂	8	5/16	14	7.50	466	16
13 x 8	8 ¹ / ₈	3 ⁵ / ₈	4	3 ¹ / ₂	8	5/16	14	7.75	505	16
14 x 8	8 ¹ / ₈	3	5	3 ¹ / ₂	8	5/16	14	8.25	543	16
15 x 8	8 ¹ / ₈	3 ¹ / ₄	5	3 ¹ / ₂	8	5/16	14	8.50	582	8
16 x 8 *	8 ¹ / ₈	2 ⁷ / ₈	6	3 ¹ / ₂	8	5/16	14	9.00	621	8
17 x 8 *	8 ¹ / ₈	3	6	3 ¹ / ₂	8	5/16	14	9.50	660	8
18 x 8 *	8 ¹ / ₈	3 ¹ / ₈	6	3 ¹ / ₂	8	5/16	14	9.75	698	8
20 x 8 *	8 ¹ / ₈	3 ¹ / ₂	6	3 ¹ / ₂	8	5/16	14	10.75	776	8
22 x 8 *	8 ¹ / ₈	4	6	3 ¹ / ₂	8	5/16	14	11.50	854	8
24 x 8 *	8 ¹ / ₈	3 ¹ / ₂	7	3 ¹ / ₂	8	5/16	14	12.00	931	8

* Supplied with lip brace. Lip braces optional on other sizes at slightly higher cost.

Grain Belt recommends spacing buckets on belt not closer than projection plus 2".

PHONE (785) 827-4491
FAX (785) 827-4494

GRAIN BELT SUPPLY CO., INC.
SALINA, KANSAS

U.S. 1-800-255-2742
1-800-432-8292
1-800-447-0522



ELEVATOR BUCKETS

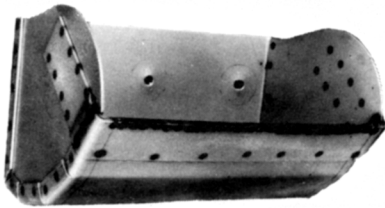
Superior Steel Digger Buckets Grain Belt Supply Co. is the leading manufacturer of "Digger" buckets. The digger bucket is made slightly oversize to provide proper digging action by loosening material in the elevator boot that has set up or hardened, thereby reducing abrasion on the plastic buckets. The Superior digger will be matched to your specific application and plastic bucket size.

Carbon steel in 10 or 12 gauge can be supplied; stainless steel diggers are made of 12 or 14 gauge material, depending upon the size of bucket.

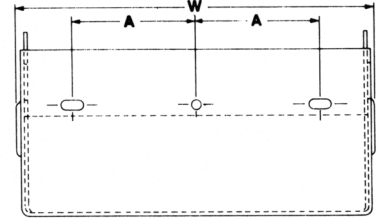
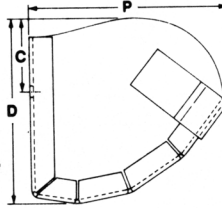
All "Diggers" are made with a wear strip on the leading edge of the buckets; the wear strip is wrapped around each end to give the bucket a double thickness of material at the wear points for added strength and abrasion resistance.

Call for a quote on the best – SUPERIOR ELEVATOR BUCKETS from GRAIN BELT SUPPLY CO.

OTHER POPULAR SIZES QUOTED UPON REQUEST



Bolt hole spacings shown below are standard. Will punch to your specifications.



CARBON STEEL

BUCKET SIZE	GAUGE		APPROX. WEIGHT IN. LBS.	DIMENSIONS			HOLE SPECIFICATIONS					BUCKET CAPACITY		BUCKET SPACING (INCHES)
	BODY	ENDS		WIDTH W	PROJ. P	DEPTH D	NO. OF HOLES C	HOLE DIA.	HOLE SPACING A	BOLT DIA.		GROSS CU. IN.	100% USE 75% CU. IN.	
6x4½	12	12	3.50	6⅝	5	4	1¼	2	9/32	4⅜	¼	80.50	60.40	6½
6x5½	10	10	4.75	6¾	6⅝	4⅜	1½	2	9/32	4⅜	¼	121	90.8	7
7x5½	10	10	6.25	7¾	6⅝	4⅜	1½	3	9/32	2⅝-2⅞	¼	140	105	7
8x5½	10	10	6.75	8¾	6⅝	4⅜	1½	3	9/32	3⅞-3⅞	¼	158.50	118.88	7
9x5½	10	10	7.25	9¾	6⅝	4⅜	1½	3	9/32	3½-3⅝	¼	177.50	133.13	7
9x6½	10	10	9.00	9¾	7⅞	5⅞	1¾	3	9/32	3½-3⅝	¼	233	174.75	8
10x6½	10	10	9.50	10¾	7⅞	5⅞	1¾	3	9/32	4-4⅞	¼	257.50	193.13	8
11x6½	10	10	10.00	11¾	7⅞	5⅞	1¾	4	9/32	3	¼	282	211.50	8
12x6½	10	10	10.75	12¾	7⅞	5⅞	1¾	4	9/32	3⅜	¼	306.50	229.88	8
13x6½	10	10	11.00	13¾	7⅞	5⅞	1¾	4	9/32	3⅝	¼	331.50	248.63	8
12x7½	10	10	13.25	12¾	8⅞	6⅞	2	4	11/32	3⅜	⅝	412.50	309.38	9
13x7½	10	10	13.75	13¾	8⅞	6⅞	2	4	11/32	3⅝	⅝	445.00	333.75	9
14x7½	10	10	14.25	14¾	8⅞	6⅞	2	5	11/32	3	⅝	477.50	358.13	9
16x7½	10	10	15.50	16¾	8⅞	6⅞	2	6	11/32	2⅞	⅝	543.50	407.63	9
12x8	10	10	14.25	12¾	8⅞	7⅞	2¼	4	11/32	3⅜	⅝	366.40	274.80	10
14x8	10	10	15.25	14¾	8⅞	7⅞	2¼	5	11/32	3	⅝	566.50	424.88	10
16x8	10	10	16.75	16¾	8⅞	7⅞	2¼	6	11/32	2⅞	⅝	644.50	483.38	10
18x8	10	10	18.50	18¾	8⅞	7⅞	2¼	6	11/32	3⅞	⅝	722.50	541.88	10
16x10	10	10	22.25	16¾	10⅞	9⅞	2¼	6	11/32	2⅞	⅝	1115.63	836.72	12

STAINLESS STEEL

BUCKET SIZE	GAUGE		APPROX. WEIGHT IN. LBS.	DIMENSIONS			HOLE SPECIFICATIONS					BUCKET CAPACITY		BUCKET SPACING (INCHES)
	BODY	ENDS		WIDTH W	PROJ. P	DEPTH D	NO. OF HOLES C	HOLE DIA.	HOLE SPACING A	BOLT DIA.		GROSS CU. IN.	100% USE 75% CU. IN.	
6x4½	14	14	2.50	6⅝	4⅞	4	1¼	2	9/32	4⅜	¼	80.50	60.40	6½
6x5½	14	14	3.25	6¾	6	4⅜	1½	2	9/32	4⅜	¼	121	90.8	7
7x5½	14	14	3.50	7¾	6	4⅜	1½	3	9/32	2⅝-2⅞	¼	140	105	7
8x5½	14	14	3.75	8¾	6	4⅜	1½	3	9/32	3⅞-3⅞	¼	158.50	118.88	7
9x5½	14	14	4.25	9¾	6	4⅜	1½	3	9/32	3½-3⅝	¼	177.50	133.13	7
9x6½	14	14	5.25	9¾	7	5⅞	1¾	3	9/32	3½-3⅝	¼	233	174.75	8
10x6½	14	14	5.50	10¾	7	5⅞	1¾	3	9/32	4-4⅞	¼	257.50	193.13	8
11x6½	14	14	5.75	11¾	7	5⅞	1¾	4	9/32	3	¼	282	211.50	8
12x6½	14	14	6.00	12¾	7	5⅞	1¾	4	9/32	3⅜	¼	306.50	229.88	8
13x6½	14	14	6.25	13¾	7	5⅞	1¾	4	9/32	3⅝	¼	331.50	248.63	8
12x7½	14	14	7.50	12¾	8	6⅞	2	4	11/32	3⅜	⅝	412.50	309.38	9
13x7½	14	14	8.00	13¾	8	6⅞	2	4	11/32	3⅝	⅝	445.00	333.75	9
14x7½	14	14	8.50	14¾	8	6⅞	2	5	11/32	3	⅝	477.50	358.13	9
16x7½	14	14	9.00	16¾	8	6⅞	2	6	11/32	2⅞	⅝	543.50	407.63	9
12x8	12	12	8.00	12¾	8⅞	7⅞	2¼	4	11/32	3⅜	⅝	366.40	274.80	10
14x8	12	12	12.50	14¾	8⅞	7⅞	2¼	5	11/32	3	⅝	566.50	424.88	10
16x8	12	12	13.50	16¾	8⅞	7⅞	2¼	6	11/32	2⅞	⅝	644.50	483.38	10
18x8	12	12	16.75	18¾	8⅞	7⅞	2¼	6	11/32	3⅞	⅝	722.50	541.88	10
16x10	12	12	17.50	16¾	10⅞	9⅞	2¼	6	11/32	2⅞	⅝	1115.63	836.72	12

PHONE (785) 827-4491
FAX (785) 827-4494

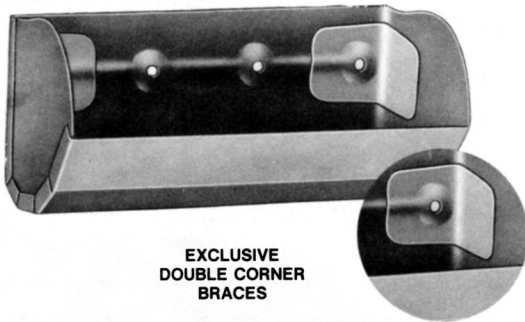
GRAIN BELT SUPPLY CO., INC.
SALINA, KANSAS

U.S. 1-800-255-2742
1-800-432-8292
1-800-447-0522

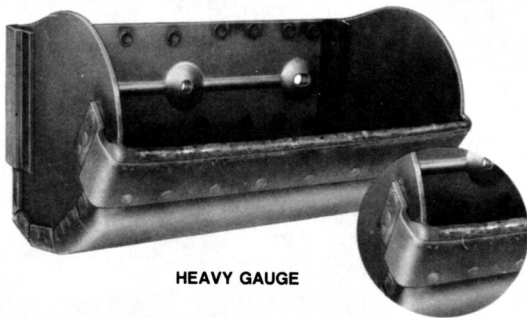


ELEVATOR BUCKETS

Superior Special Buckets

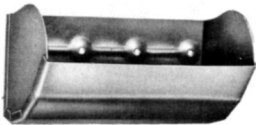


EXCLUSIVE
DOUBLE CORNER
BRACES

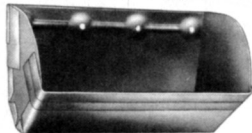


HEAVY GAUGE

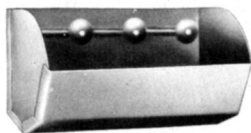
IN ADDITION, THE THREE-PIECE BUCKETS in the four styles pictured below are available on special order. All of these styles are available in **TYPE B** (without double thickness lip) or in **TYPE A** (with double thickness lip).



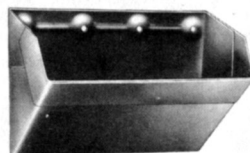
CC TYPE "B"



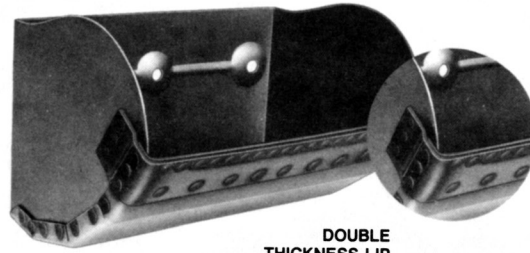
OK TYPE "A"



DP TYPE "B"



V TYPE "A"



DOUBLE
THICKNESS LIP

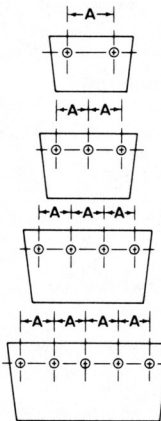
STEEL BUCKETS WITH THESE SPECIAL FEATURES are available on special order:

- Reinforcing corner braces
- Double thickness lip
- Center brace
- Heavy gauge construction
- Special bolt hole punching

WE WILL MANUFACTURE ANY TYPE OF BUCKET TO YOUR SPECIFICATIONS.

STANDARD PUNCHING FOR THREE-PIECE BUCKETS
— or will punch to your specifications.

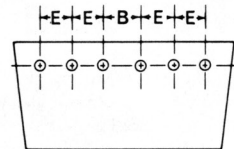
ALL
DIMENSIONS
IN INCHES



*Less center
brace

Cup Length on Belt	A	No. of Holes
2	7/8	2
2½	1 ¼	2
3	1 ¾	2
3½	2 1/8	2
4	2 ½	2
4½	3 ¼	2
5	3 ½	2
5½	4	2
6	4 ½	2
6½	4 ¾	2
7	2 5/8	3
7½	3	3
8	3 1/8	3
8½	3 ¼	3
9	3 ½	3
9½	3 ¾	3
10	4	3
11	3 1/8	4
12	3 ¾	4
13	3 5/8	4
14	4	4
15	3 ¾	5
16*	3 ½	5
17*	3 ¾	5
18*	4	5
19*	4 ¼	5
20*	3 ½	6
22*	4	6
24*	3 1/8	8

PUNCHING FOR
CUPS WITH CENTER BRACE



Cup Length on Belt	E	B	No. of Holes
16	2 5/8	3 ¼	6
17	2 5/8	3 ¼	6
18	3	4	6
19	3 ¼	4	6
20	3 ½	4	6
22	4	4	6
24	3	4	8

All cups are punched with 9/32" holes for 1/4" bolts as standard; 11/32" holes for 5/16" bolts and 13/32" holes for 3/8" diameter bolts. Larger holes will be punched if specified—all at no additional charge.

CALL US TOLL-FREE FOR A QUOTATION ON THESE SPECIAL BUCKETS.

PHONE (785) 827-4491
FAX (785) 827-4494

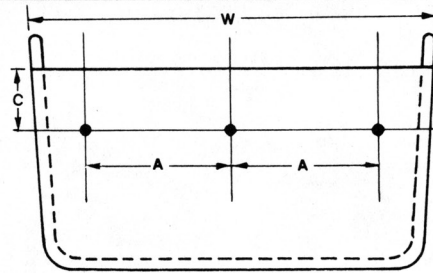
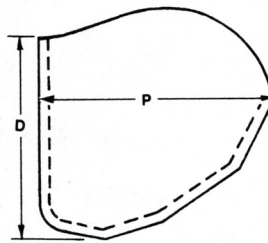
GRAIN BELT SUPPLY CO., INC.
SALINA, KANSAS

U.S. 1-800-255-2742
1-800-432-8292
1-800-447-0522



ELEVATOR BUCKETS

Superior Plastic Buckets



Bucket Size	Dimensions			Punching			Bolt Size	Approx. Weight (LBS.)	Gross Cu. In. Capacity	No. per Box
	(W) Width	(P) Proj.	(D) Depth	(A) Centers	(C) Down	No. Holes				
6x4	6 1/2	4 9/16	3 3/4	4 3/8	1 1/4	2	1/4	.78	61.9	70
6x5	6 1/2	5 5/8	4 9/16	4 3/8	1 1/2	2	1/4	.93	97	60
7x5	7 1/2	5 5/8	4 9/16	2 11/16	1 1/2	3	1/4	1.08	109.9	50
8x5	8 1/2	5 5/8	4 9/16	3 1/16	1 1/2	3	1/4	1.15	127.6	44
9x5	9 1/2	5 5/8	4 9/16	3 5/8	1 1/2	3	1/4	1.28	143.5	44
9x6	9 1/2	6 5/8	5 1/2	3 5/8	1 3/4	3	1/4	1.54	201.4	28
10x6	10 1/2	6 5/8	5 1/2	4 1/8	1 3/4	3	1/4	1.70	220	24
11x6	11 1/2	6 5/8	5 1/2	3	1 3/4	4	1/4	1.78	242	22
12x6	12 1/2	6 5/8	5 1/2	3 3/8	1 3/4	4	1/4	1.88	264	20
13x6	13 1/2	6 5/8	5 1/2	3 5/8	1 3/4	4	1/4	1.98	286	18
11x7	11 1/2	7 11/16	6 3/8	3	2	4	5/16	2.15	329	16
12x7	12 1/2	7 11/16	6 3/8	3 3/8	2	4	5/16	2.27	359	15
13x7	13 1/2	7 11/16	6 3/8	3 5/8	2	4	5/16	2.39	389	12
14x7	14 1/2	7 11/16	6 3/8	3	2	5	5/16	2.50	419	12
16x7	16 1/2	7 11/16	6 3/8	2 7/8	2	6	5/16	2.58	478	12
12x8	12 3/8	8 3/8	7 1/4	3 3/8	2 1/4	4	5/16	2.50	469	8
14x8	14 3/8	8 3/8	7 1/4	3	2 1/4	5	5/16	2.88	547	8
16x8	16 3/8	8 3/8	7 1/4	2 7/8	2 1/4	6	5/16	3.31	625	8
18x8	18 3/8	8 3/8	7 1/4	3 1/8	2 1/4	6	5/16	3.85	703	8
16x10	16 1/16	10 1/8	9 5/8	2 7/8	2 1/4	6	5/16	4.36	1050	4

GENERAL INFORMATION

TEMPERATURE RANGE: -60°F to +180°F

METHOD OF MANUFACTURE: Injection molded.

SPACING ON BELT: Recommended not closer than projection plus 2".

FDA Approved

PERFORATIONS: 1/4" Diameter perforations available.

INSTALLATION: Flat washers should be used, and also suggest using lock washers.

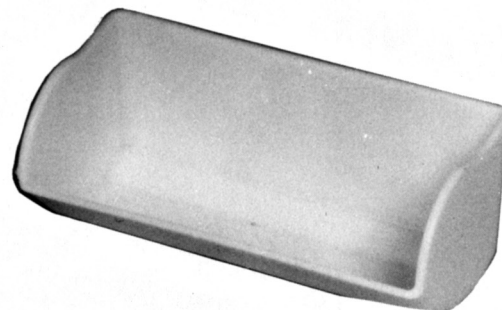
Plastic Buckets

The original "CC" design is molded from pure, virgin polyethylene plastic. These extremely tough and abrasion resistant buckets are available in a variety of sizes.

If your application requires a light weight, non-corrosive bucket that will give a clean discharge and true capacities — try the original "CC" Plastic — from Grain Belt Supply Co., Inc.

Also available in low profile.

When elevating material that has a tendency to set up and harden, digger buckets should be used as they are wider and have more projection than standard plastic buckets. This will keep a clear path for the plastic buckets causing less wear from abrasion and increase the life of the buckets.



Call us today. We will be happy to be of service to you for your plastic and metal bucket requirements, and any other equipment for the grain industry.

PHONE (785) 827-4491
FAX (785) 827-4494

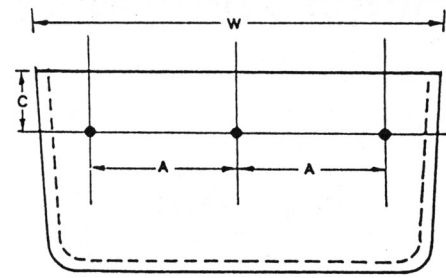
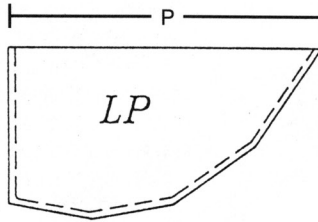
GRAIN BELT SUPPLY CO., INC.
SALINA, KANSAS

U.S. 1-800-255-2742
1-800-432-8292
1-800-447-0522



ELEVATOR BUCKETS

Superior Plastic Low Profile Buckets



Bucket Size	Dimensions			Punching			Minimum Spacing	Bolt Size	Approx. Weight (LBS.)	Gross Cu. In. Capacity	Water Level Cu. In. Capacity
	(W) Width	(P) Proj.	(D) Depth	(A) Centers	(C) Down	No. Holes					
6x4	6½	4⅞	3	4⅞	1	2	3	¼	.56	61.9	46.07
6x5	6½	5⅝	3¾	4⅞	1	2	4	¼	.75	97	69.57
7x5	7½	5⅝	3¾	2⅞	1	3	4	¼	.81	109.9	82.99
8x5	8½	5⅝	3¾	3⅞	1	3	4	¼	.93	127.6	93.90
9x5	9½	5⅝	3¾	3⅝	1	3	4	¼	1.00	143.5	106.49
9x6	9½	6⅝	4½	3⅝	1	3	5	¼	1.12	201.4	149.51
10x6	10½	6⅝	4½	4⅞	1	3	5	¼	1.37	220	164.76
11x6	11½	6⅝	4½	3	1	4	5	¼	1.43	242	181.79
12x6	12½	6⅝	4½	3⅝	1	4	5	¼	1.62	264	198.63
13x6	13½	6⅝	4½	3⅝	1	4	5	¼	1.75	286	219.08
11x7	11½	7⅞	5¼	3	1	4	6	⅝	1.75	329	241.35
12x7	12½	7⅞	5¼	3⅝	1	4	6	⅝	1.93	359	263.01
13x7	13½	7⅞	5¼	3⅝	1	4	6	⅝	2.05	389	284.68
14x7	14½	7⅞	5¼	3	1	5	6	⅝	2.12	419	311.22
16x7	16½	7⅞	5¼	2⅞	1	6	6	⅝	2.37	478	356.69
12x8	12⅝	8⅝	5¾	3⅝	1¼	4	7	⅝	2.06	469	331.97
14x8	14⅝	8⅝	5¾	3	1¼	5	7	⅝	2.31	547	391.77
16x8	16⅝	8⅝	5¾	2⅞	1¼	6	7	⅝	2.56	625	415.11
18x8	18⅝	8⅝	5¾	3⅝	1¼	6	7	⅝	2.81	703	494.32
16x10	16⅞	10⅝	7⅞	2⅞	1¼	6	9	⅝	3.68	1050	830.40

GENERAL INFORMATION

TEMPERATURE RANGE: -60°F to +180°F
 METHOD OF MANUFACTURE: Injection molded.
 FDA Approved

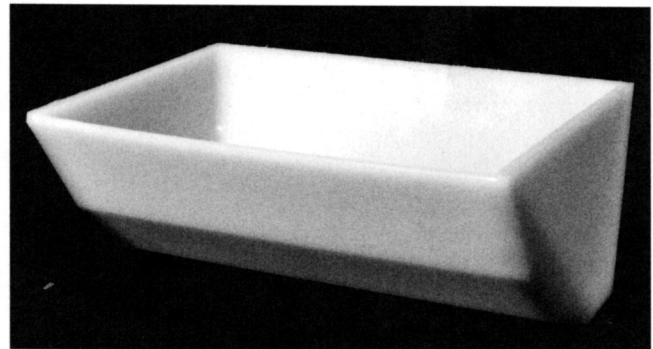
PERFORATIONS: ¼" Diameter perforations available.
 INSTALLATION: Flat washers should be used, and also suggest using lock washers.

Plastic Buckets

The original low-profile design is molded from pure virgin polyethylene plastic. These extremely tough and abrasion resistant buckets are available in a variety of sizes.

If your application requires a light weight, non-corrosive bucket that will give a clean discharge and true capacities – try the original low-profile Plastic – from Grain Belt Supply Co., Inc.

When elevating material that has a tendency to set up and harden, digger buckets should be used as they are wider and have more projection than standard plastic buckets. This will keep a clear path for the plastic buckets causing less wear from abrasion and increase the life of the buckets.



Call us today. We will be happy to be of service to you for your plastic and metal bucket requirements, and any other equipment for the grain industry.

PHONE (785) 827-4491
 FAX (785) 827-4494

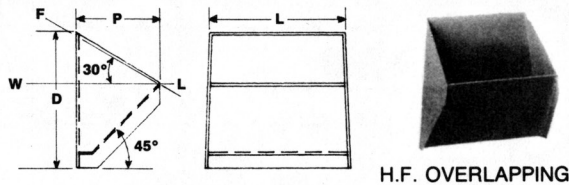
GRAIN BELT SUPPLY CO., INC.
 SALINA, KANSAS

U.S. 1-800-255-2742
 1-800-432-8292
 1-800-447-0522



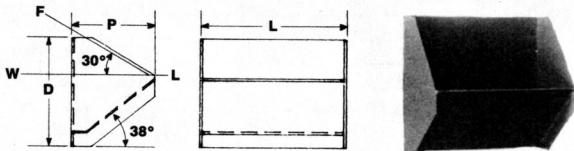
ELEVATOR BUCKETS

Superior Continuous Buckets



H.F. OVERLAPPING

BUCKET SIZE, INCHES □			CAPACITY*		WEIGHT EACH, LBS		
L	P	D	LINE "F-L"	LINE "W-L"	THICKNESS OF STEEL		
LENGTH	PROJ.	DEPTH	CUBIC FEET	CUBIC FEET	12 GA.	10 GA.	7 GA.
8	5	8½	.089	.059	5.4	6.8	9.0
10	5	8½	.112	.077	6.3	8.0	10.6
10	6	10	.162	.108	7.7	9.8	13.0
10	7	12½	.227	.150	9.5	12.1	16.1
12	6	10	.193	.126	8.8	11.2	14.8
12	7	12½	.275	.182	10.8	13.7	18.2
12	8	12½	.320	.200	12.3	15.6	20.8
14	7	12½	.333	.224	12.0	15.3	20.4
14	8	12½	.386	.246	13.7	17.4	23.2
16	8	12½	.425	.265	15.2	19.3	25.8
16	12	18½	.962	.605	31.7	42.6	
20	12	18½	1.203	.755	37.1	49.9	
24	12	18½	1.444	.905	42.5	57.2	



M.F. NON-OVERLAPPING

BUCKET SIZE, INCHES □			CAPACITY*		WEIGHT EACH, LBS		
L	P	D	LINE "F-L"	LINE "W-L"	THICKNESS OF STEEL		
LENGTH	PROJ.	DEPTH	CUBIC FEET	CUBIC FEET	12 GA.	10 GA.	7 GA.
8	5	7¾	.080	.040	5.5	7.0	9.5
9	6	9¼	.116	.068	7.1	9.1	12.4
10	5	7¾	.100	.050	6.3	8.1	11.0
10	6	9¼	.129	.075	7.6	9.8	13.3
10	7	11½	.192	.103	10.0	12.9	17.5
10	8	11½	.235	.135	10.6	13.6	18.4
11	6	9¼	.142	.081	8.1	10.4	14.2
12	6	9¼	.155	.091	8.6	11.1	15.0
12	7	11½	.230	.125	11.3	14.5	19.6
12	8	11½	.275	.163	11.9	15.3	20.8
14	7	11½	.270	.145	12.5	16.1	21.8
14	8	11½	.323	.190	13.2	16.9	23.0
16	8	11½	.370	.220	14.5	18.7	25.3
16	12	17½	.833	.490	31.5	42.8	
18	8	11½	.415	.250	15.8	20.4	27.6
18	10	15	.690	.379	27.4	37.2	
20	8	11½	.458	.270	17.2	22.1	29.9
20	12	17½	1.047	.620	36.6	49.7	
24	10	11½	.725	.512	28.6	38.8	
24	12	17½	1.255	.745	41.7	56.7	

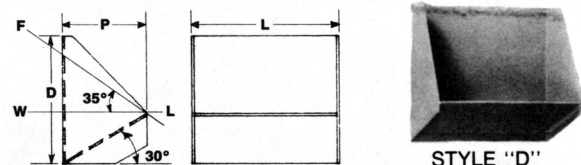
Grain Belt Supply Co. offers the SUPERIOR CONTINUOUS BUCKET in four styles. The High front overlapping, High front non-overlapping, Medium front and Style "D".

The Continuous style buckets are placed on close centers and operate at very slow speeds. The front of each bucket acts as a discharge chute for each succeeding bucket.

All continuous buckets are of formed and continuously welded construction in 7, 10 or 12 gauge carbon steel. Stainless steel can also be supplied. Punching for either belt or chain is provided at no additional charge.

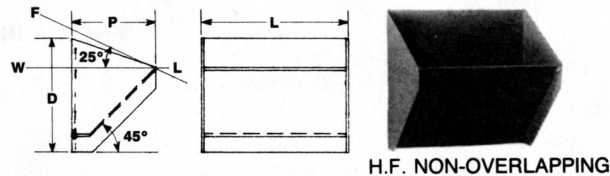
* CAPACITIES SHOWN ARE TO BE USED AS A GUIDE. ACTUAL CAPACITIES DEPEND ON LOADING, ANGLE OF REPOSE OF MATERIAL AND INCLINATION OF ELEVATOR.

□ DIMENSIONS ARE SUBJECT TO CHANGE.



STYLE "D"

BUCKET SIZE, INCHES □			CAPACITY*		WEIGHT EACH, LBS		
L	P	D	LINE "F-L"	LINE "W-L"	THICKNESS OF STEEL		
LENGTH	PROJ.	DEPTH	CUBIC FEET	CUBIC FEET	12 GA.	10 GA.	7 GA.
8	5	7¾	.068	.028	5.87	7.48	9.98
12	5	7¾	.106	.045	7.53	9.68	12.90
12	7	11¾	.219	.099	12.21	15.69	20.93
14	8	11¾	.402	.220	14.53	18.68	24.90
16	7	11¾	.288	.129	14.57	18.73	24.98



H.F. NON-OVERLAPPING

BUCKET SIZE, INCHES □			CAPACITY*		WEIGHT EACH, LBS		
L	P	D	LINE "F-L"	LINE "W-L"	THICKNESS OF STEEL		
LENGTH	PROJ.	DEPTH	CUBIC FEET	CUBIC FEET	12 GA.	10 GA.	7 GA.
8	5	7¾	.083	.052	5.5	6.9	9.3
10	5	7¾	.104	.065	6.5	8.3	11.0
10	6	9¼	.151	.098	7.9	10.1	13.5
10	7	11½	.207	.130	10.0	12.8	17.2
12	6	9¼	.180	.115	9.1	11.6	15.5
12	7	11½	.249	.155	11.4	14.6	19.5
12	8	11½	.296	.205	12.3	15.7	21.1
14	7	11½	.290	.184	12.8	16.3	21.9
14	8	11½	.358	.240	13.8	17.6	23.6
16	8	11½	.393	.275	15.3	19.4	26.1
16	12	17½	.891	.635	32.0	43.1	
18	10	15	.725	.485	28.3	38.1	
20	12	17½	1.114	.800	37.5	50.6	
24	12	17½	1.335	.960	43.0	58.0	

PHONE (785) 827-4491
FAX (785) 827-4494

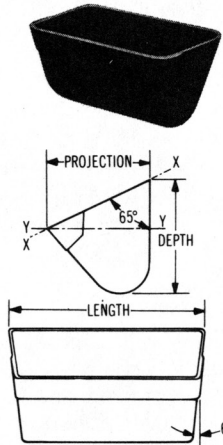
GRAIN BELT SUPPLY CO., INC.
SALINA, KANSAS

U.S. 1-800-255-2742
1-800-432-8292
1-800-447-0522



ELEVATOR BUCKETS

Superior Industrial Buckets



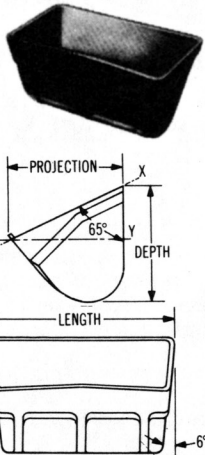
STYLE AA Steel and ductile iron buckets are used on centrifugal discharge bucket elevators and can be mounted on either chain or belt. They are suitable for handling fine and medium size materials such as coal, cement, pulp, grain and heavy abrasive materials like sand, gravel and stone.

Style AA buckets have a thick, wide, reinforced lip that prolongs wear life and prevents distortion when handling heavy abrasive materials. Style A (less front lip) available on request.

Bucket Dimensions, Inches			Average Wall Thickness, inches*	Approx. Weight Pounds	Capacity Cubic Feet ■		Max. Lump Size When % of Lumps is-		
Length	Projection	Depth			Filled to Line X-X	Filled to Line Y-Y	Under 0%	Over 10%	75% & Over
4	2 3/4	3	3/32	1.75	0.01	.006	1 3/4	1	1/2
6	4	4 1/4	3/32	2.7	0.03	0.018	2 1/2	2	1
8	5	5 1/2	3/32	4.8	0.07	0.042	3	2 1/2	1 1/4
9	6	6 1/4	1/8	6.1	0.11	0.066	3 1/4	2 3/4	1 3/8
10	6	6 1/4	1/8	7.7	0.12	0.072	3 1/2	3	1 1/2
12	6	6 1/4	1/8	9.4	0.14	0.084	3 1/2	3	1 1/2
12	7	7 1/4	5/32	12.0	0.19	0.114	4	3 1/2	1 3/4
14	7	7 1/4	5/32	13.9	0.23	0.138	4	3 1/2	1 3/4
14	8	8 1/2	3/16	18.5	0.30	0.180	4 1/2	4	2
15	7	7 1/4	5/32	14.8	0.25	0.150	4	3 1/2	1 3/4
16	7	7 1/4	5/32	15.9	0.27	0.162	4	3 1/2	1 3/4
16	8	8 1/2	3/16	21.8	0.34	0.204	4 1/2	4	2
18	8	8 1/2	3/16	23.5	0.39	0.234	4 1/2	4	2
18	10	10 1/2	7/32	34.4	0.61	0.366	5	4 1/2	2 1/4
20	8	8 1/2	3/16	26.5	0.43	0.258	5	4 1/2	2 1/4
24	8	8 1/2	3/16	30.5	0.51	0.306	6	5	2 3/4

* Except lips.

■ The actual capacity will vary with the loading conditions, angle of repose of the material being handled and the inclination of the elevator. Shaded sizes in stock.

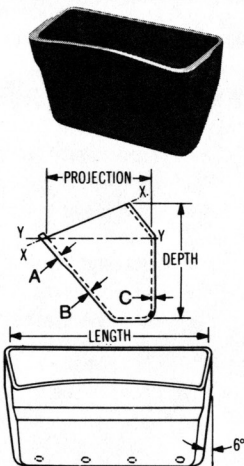


STYLE AA-RB Steel and ductile iron buckets are similar to style AA buckets except that they are designed for extra heavy service. Thicker backs and vertical ribs in the front are combined with reinforced lips and corners to make this bucket ideal for the most severe service.

Bucket Dimensions, Inches			Average Wall Thickness, inches*	Approx. Weight Pounds	Capacity Cubic Feet ■		Max. Lump Size When % of Lumps is-		
Length	Projection	Depth			Filled to Line X-X	Filled to Line Y-Y	Under 0%	Over 10%	75% & Over
8	5	5 1/2	3/32	5.3	0.07	0.042	3	2 1/2	1 1/4
10	6	6 1/4	1/8	8.5	0.12	0.072	3 1/2	3	1 1/2
12	6	6 1/4	1/8	10.4	0.14	0.084	3 1/2	3	1 1/2
12	7	7 1/4	5/32	13.8	0.19	0.114	4	3 1/2	1 3/4
14	7	7 1/4	5/32	16.0	0.23	0.138	4	3 1/2	1 3/4
14	8	8 1/2	3/16	22.0	0.30	0.180	4 1/2	4	2
16	7	7 1/4	5/32	18.1	0.27	0.162	4	3 1/2	1 3/4
16	8	8 1/2	3/16	25.4	0.34	0.204	4 1/2	4	2
18	8	8 1/2	3/16	29.5	0.39	0.234	4 1/2	4	2
18	10	10 1/2	7/32	36.5	0.61	0.366	5	4 1/2	2 1/4

* Except lips.

■ The actual capacity will vary with the loading conditions, angle of repose of the material being handled and the inclination of the elevator.



STYLE AC Steel and ductile iron buckets are used on centrifugal discharge bucket elevators for mounting on chain. They are suitable for handling dry, fluffy materials such as lime or cement.

Style AC buckets have a greater carrying capacity and a faster, more thorough discharge. Air pressure relief holes in the bottom of the buckets assure efficient loading and unloading of free flowing materials. The backs are hooded to permit closer bucket spacing, and the high fronts increase capacity. The thick, wide reinforced lips prolong wear life and prevent distortion.

Bucket Dimensions, Inches						Approx. Weight Pounds	Capacity, Cubic Feet ■	
Length	Projection	Depth	A	B	C		Filled to Line X-X	Filled to Line Y-Y
12	8	8 1/2	7/16	7/32	3/8	28	0.28	0.21
16	8	8 1/2	7/16	7/32	3/8	34	0.38	0.28
18	10	10 1/2	1/2	1/4	7/16	52	0.62	0.49
24	10	10 1/2	1/2	1/4	7/16	72	0.85	0.68

■ The actual capacity will vary with the loading conditions, angle of repose of the material being handled and the inclination of the elevator.

PHONE (785) 827-4491
FAX (785) 827-4494

GRAIN BELT SUPPLY CO., INC.
SALINA, KANSAS

U.S. 1-800-255-2742
1-800-432-8292
1-800-447-0522



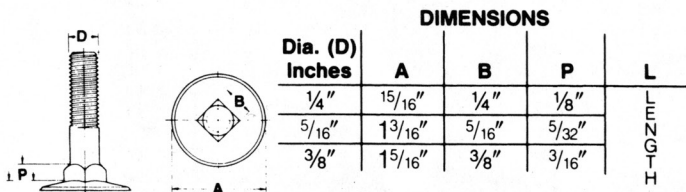
ELEVATOR BUCKETS

Bolts

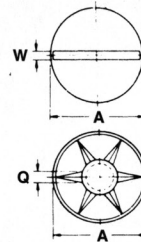
Grain Belt offers a large selection of *in stock* elevator bolts. Ready for shipment are the #1 Norway (flat head) and the #3 Reliance (slotted head) elevator bolts. The #1 Norway bolts are available in $\frac{1}{4}$ ", $\frac{5}{16}$ " and $\frac{3}{8}$ " diameters in lengths to 3". The #3 Reliance bolts are available in $\frac{1}{4}$ " and a new $\frac{5}{16}$ " diameter in lengths to $1\frac{1}{2}$ ".

The #1 Norway bolt is available in Stainless Steel in the $\frac{1}{4}$ " and $\frac{5}{16}$ " diameters only.

Square nuts and several types of lock nuts are available. Grain Belt can also supply your needs for washers of all kinds: lock, flat, neoprene or leather in all sizes.



NO. 1 NORWAY FLAT HEAD ELEVATOR BOLTS W/NUTS



Dia. (D) INCHES	A	H	S	L	W	Q
$\frac{1}{4}$ "	$\frac{23}{32}$ "	$\frac{3}{32}$ "	$\frac{11}{32}$ "	LENGTH	$\frac{3}{32}$ "	$\frac{3}{32}$ "
$\frac{5}{16}$ "	$\frac{7}{8}$ "	$\frac{5}{32}$ "	$\frac{13}{64}$ "	LENGTH	$\frac{3}{32}$ "	$\frac{7}{64}$ "

SIZE	PACKAGED		BULK		STAINLESS STEEL	
	COUNT PER PACKAGE	WEIGHT PER PACKAGE	MINIMUM QUANTITY	WEIGHT PER CONTAINER	COUNT PER PACKAGE	WEIGHT PER PACKAGE
$\frac{1}{4} \times \frac{3}{4}$	100	2.75	1000	22.88	100	2.63
$\frac{1}{4} \times \frac{7}{8}$	100	3.00	1000	24.38		
$\frac{1}{4} \times 1$	100	3.06	1000	25.00	100	3.06
$\frac{1}{4} \times 1\frac{1}{4}$	100	3.25	1000	27.50	100	3.38
$\frac{1}{4} \times 1\frac{1}{2}$	100	3.50	1000	29.50	100	3.75
$\frac{1}{4} \times 1\frac{3}{4}$	100	3.63	1000	30.50		
$\frac{1}{4} \times 2$	100	3.94	1000	34.13		
$\frac{1}{4} \times 2\frac{1}{4}$	100	4.81	1000	40.75		
$\frac{1}{4} \times 2\frac{1}{2}$	100	4.94	1000	44.00		
$\frac{1}{4} \times 3$	100	5.56	1000	50.50		
$\frac{5}{16} \times \frac{3}{4}$	100	4.56	1000	37.00		
$\frac{5}{16} \times 1$	100	4.88	1000	39.25	100	5.25
$\frac{5}{16} \times 1\frac{1}{4}$	100	5.25	1000	45.25	100	5.56
$\frac{5}{16} \times 1\frac{1}{2}$	100	5.63	1000	49.25	100	6.25
$\frac{5}{16} \times 1\frac{3}{4}$	100	5.88	1000	54.50	100	6.31
$\frac{5}{16} \times 2$	100	6.69	1000	58.38	100	7.00
$\frac{5}{16} \times 2\frac{1}{4}$	100	7.13	1000	65.38		
$\frac{5}{16} \times 2\frac{1}{2}$	100	7.94	1000	71.50		
$\frac{5}{16} \times 2\frac{3}{4}$	100	8.00	1000	79.00		
$\frac{3}{8} \times 1$	50	7.06	500	56.50		
$\frac{3}{8} \times 1\frac{1}{4}$	50	8.25	500	60.63		
$\frac{3}{8} \times 1\frac{1}{2}$	50	8.38	500	73.50		
$\frac{3}{8} \times 1\frac{3}{4}$	50	8.75	500	78.50		
$\frac{3}{8} \times 2$	50	9.50	500	80.00		
$\frac{3}{8} \times 2\frac{1}{4}$	50	11.63	500	98.25		
$\frac{3}{8} \times 2\frac{1}{2}$	50	12.13	500	106.75		
$\frac{3}{8} \times 3$	50	13.50	500	120.00		

NOTE:
ALL BOLTS 2"
AND SHORTER IN
LENGTH ARE
THREADED TO
THE SHOULDER.

Recommended Torque

The recommended torque of an elevator bolt is largely based on the type of metal and the diameter of the shank. However, assembly torque will be affected by belt type and the numbers shown are only average values.

Recommended Torque* (in. lbs. or kg. m.)

Shank Dia.	Steel in. lbs. kg. m.	Stainless in. lbs. kg. m.
$\frac{1}{4}$ "	50 7	86 12
$\frac{5}{16}$ "	96 13	177 25
$\frac{3}{8}$ "	180 25	— —

* Do not exceed recommended torque values, as this may strip bolts. In many instances, a commercial thread locking substance is advisable to prevent loosening of elevator bolt assemblies.

**ALL BOLTS AND FASTENERS LISTED ARE
AVAILABLE IN CARBON STEEL AND
STAINLESS STEEL.**

► **Prices for all fasteners are per 100 quantity.**

MISCELLANEOUS FASTENERS AND WASHERS



$\frac{1}{4}$ " Whiz Lock Nuts
 $\frac{5}{16}$ " Whiz Lock Nuts
 $\frac{3}{8}$ " Whiz Lock Nuts



$\frac{1}{4}$ " External Tooth Lock Washers
 $\frac{5}{16}$ " External Tooth Lock Washers
 $\frac{3}{8}$ " External Tooth Lock Washers



$\frac{1}{4}$ " Square Nuts
 $\frac{5}{16}$ " Square Nuts
 $\frac{3}{8}$ " Square Nuts



$\frac{1}{4}$ " Leather Washers
 $\frac{5}{16}$ " Leather Washers
 $\frac{3}{8}$ " Leather Washers



$\frac{1}{4}$ " Flat Washers
 $\frac{5}{16}$ " Flat Washers
 $\frac{3}{8}$ " Flat Washers



$\frac{1}{4}$ " Nylon Insert Lock Nuts
 $\frac{5}{16}$ " Nylon Insert Lock Nuts
 $\frac{3}{8}$ " Nylon Insert Lock Nuts



$\frac{1}{4}$ " Neoprene Washers
 $\frac{5}{16}$ " Neoprene Washers
 $\frac{3}{8}$ " Neoprene Washers



$\frac{1}{4}$ " Lock Washers
 $\frac{5}{16}$ " Lock Washers
 $\frac{3}{8}$ " Lock Washers

PHONE (785) 827-4491
FAX (785) 827-4494

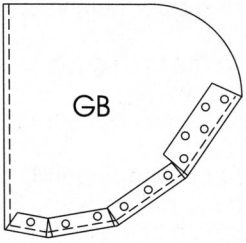
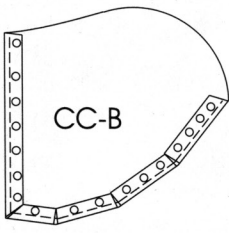
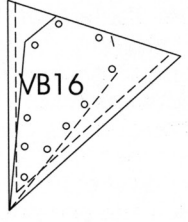
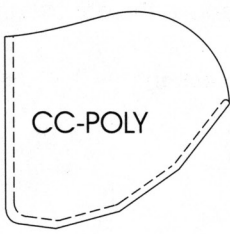
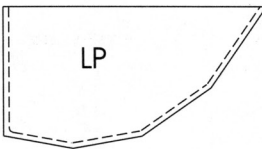
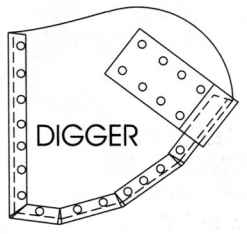
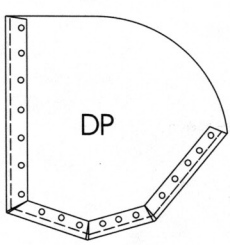
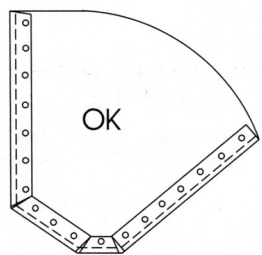
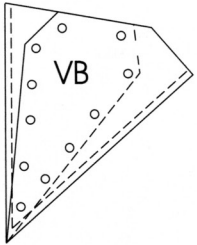
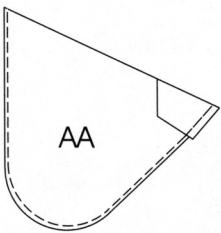
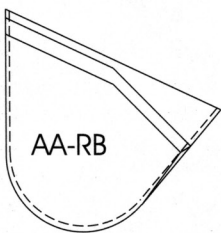
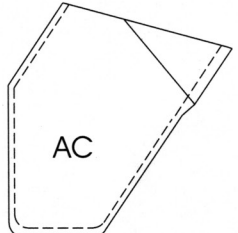
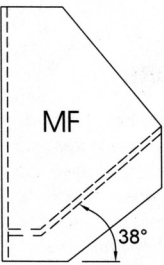
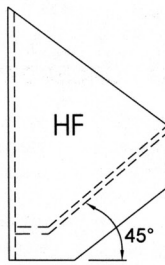
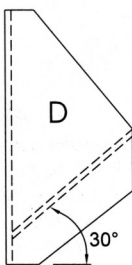
GRAIN BELT SUPPLY CO., INC.
SALINA, KANSAS

U.S. 1-800-255-2742
1-800-432-8292
1-800-447-0522



ELEVATOR BUCKETS

Superior Bucket Identification Chart

 GB	 CC-B	 VB16
 CC-POLY	 LP	 DIGGER
 DP	 OK	 VB
 AA	 AA-RB	 AC
 MF 38°	 HF 45°	 D 30°

PHONE (785) 827-4491
FAX (785) 827-4494

GRAIN BELT SUPPLY CO., INC.
SALINA, KANSAS

U.S. 1-800-255-2742
1-800-432-8292
1-800-447-0522



ELEVATOR BUCKETS

Technical Information

For best results the diameter of the head pulley should be at least five times the projection of the elevator bucket, and the diameter of the head pulley should be increased for tall legs.

The head should be sufficiently large enough so that material will not rebound to the top and discharge side of the head section and into the down leg.

The radius of the elevator head on the discharge side of the head pulley should be equal to the diameter of the head pulley plus one and one-half times the projection of the elevator bucket. In extremely large or small installations, this recommendation may be altered somewhat.

The chute or discharge box should be located at least 2 inches below the bottom of the head pulley.

The throat to the down-leg should be closed as much as possible with a piece of rubber belting adjusted close to the bucket.

The "V" board slopes to the up-leg preferably on the head section and into the down leg.

The vent to the roof is optional, but some form of air relief is recommended.

The success of an elevator also depends on the ratio of the boot pulley to the head pulley. A small boot pulley not only decreases the loading efficiency of the buckets but also increases the wear and tear on the buckets and the belt.

Feeding on the up leg above the boot shaft is preferred.

	Bucket Projection	Inside Leg	Bucket Projection	Inside Leg
MEASUREMENT FOR INSIDE TRUNKING OF ELEVATORS; WITH SHAFT CENTERS 25 FEET HIGH	2"	4 1/4"	5"	9"
	2 1/2"	4 3/4"	5 1/2"	10 1/4"
	3"	5 3/4"	6"	10 3/4"
	3 1/2"	6 1/4"	6 1/2"	11 1/2"
	4"	7 1/4"	7"	12"
	4 1/2"	7 3/4"	7 1/2"	12 1/2"
			8"	13 1/4"

**DIA. AND CIRCUMFERENCE
OF PULLEY**

Dia. Inches	Dia. Feet	Circumference, Feet	Dia. Inches	Dia. Feet	Circumference, Feet
8	.66	2.07	28	2.33	7.32
9	.75	2.35	30	2.50	7.85
10	.84	2.64	32	2.66	8.35
11	.92	2.89	36	3.00	9.42
12	1.00	3.14	40	3.33	10.46
13	1.08	3.39	42	3.50	10.99
14	1.16	3.64	48	4.00	12.57
15	1.25	3.92	54	4.50	14.14
16	1.33	4.18	60	5.00	15.71
18	1.50	4.71	66	5.50	17.28
20	1.66	5.21	72	6.00	18.85
21	1.75	5.50	84	7.00	21.99
22	1.83	5.75	96	8.00	25.13
24	2.00	6.28			

FORMULA FOR FIGURING HORSEPOWER TO DRIVE ELEVATORS

The approximate horsepower required to elevate a given quantity of material is obtained by the following:

The capacities of elevators being generally given in bushels per hour, find the number of pounds elevated per hour by multiplying the number of bushels by the weight of each bushel; dividing this by 60 will give the

pounds lifted per minute. Multiply the number of pounds lifted per minute by the height of the elevator in feet and divide the product by 33,000. The result will give the theoretical horsepower necessary, to which should be added 10 to 50 per cent for friction progressively with the efficiency of the equipment and capacity of the elevator.

PHONE (785) 827-4491
FAX (785) 827-4494

GRAIN BELT SUPPLY CO., INC.
SALINA, KANSAS

U.S. 1-800-255-2742
1-800-432-8292
1-800-447-0522



ELEVATOR BUCKETS

Technical Information

HOW TO ESTIMATE THE CAPACITY OF AN ELEVATOR — USE OUR TABLE FOR CAPACITY OF ELEVATOR BUCKETS

To find the capacity of an elevator it is necessary to ascertain the capacity of the bucket in cubic inches, the spacing of the bucket on the belt, and the speed of the belt in feet per minute. Then proceed as follows: Multiply the capacity of the bucket with the multiplier given in the table below, the result will be the capacity in cubic inches of every running foot of belt. Multiply this with the belt speed, which gives the cubic inches discharged per minute. This multiplied by 60 gives the discharge in cubic inches per hour. Divide the result by 2150 (which

is the cubic inch capacity of one bushel) and you have the capacity in bushels per hour, or by 1728 for capacity in cubic feet. Deduct from this amount 10% to 25% for actual safe capacity per hour.

To convert inches into feet — multiply inches by 0.0834.
Circumference of pulley in feet equals diameter in feet x 3.1416.

Belt speed in feet per minute equals circumference in feet x revolutions per minute.

MULTIPLIER TO USE WITH ABOVE SPACING IN ESTIMATING CAPACITY OF ELEVATORS

Spacing on belt in ins.	3	3½	4	5	6	6½	7	7½	8	8½	9	9½	10	11	12	13	14	15	16	17	18
Multiplier	4.00	3.43	3.00	2.40	2.00	1.85	1.70	1.60	1.50	1.40	1.33	1.26	1.20	1.09	1.00	.923	.86	.80	.75	.705	.66

TABLE OF SPEEDS

Speeds—R.P.M. and Feet per Minute of Elevator Belt

Pulleys Dia. Inches	Standard Low Speed		DP BUCKETS Limit for DP Used with Flour		Limit for DP Used with Grain		OK BUCKETS High Speed OK Buckets			
	R.P.M.	Belt F.P.M.	R.P.M.	Belt F.P.M.	R.P.M.	Belt F.P.M.	R.P.M.	Belt F.P.M.	R.P.M.	Belt F.P.M.
8	75	155	148	306	163	337	148	306	220	455
9	70	164	131	308	144	338	131	308	210	493
10	64	169	117	309	128	339	117	309	200	528
11	60	173	107	312	118	342	107	312	190	549
12	56	176	100	314	110	345	100	314	180	565
13	53	180	93	315	102	345	93	315	172	603
14	50	182	87	317	96	349	87	317	165	600
15	50	196	81	318	89	349	81	318	158	619
16	48	200	77	321	84	351	77	321	150	627
18	44	207	69	324	76	359	69	324	140	659
20	42	219	62	323	68	354	62	323	130	677
22	40	230	58	333	64	368	58	333	120	690
24	38	238	54	339	59	371	54	339	110	691
28	38	278	52	380	57	417	52	380	100	732
30	38	298	50	392	55	431	50	392	95	745
32	38	317	50	417	55	459	50	417	90	751
36	37	348	48	452	53	498	48	452	85	800
40	36	377	45	470	50	523	45	470	80	836
42	36	395	44	483	48	528	44	483	78	857
48	34	427	42	528	46	578	42	528	70	880
54	32	452	40	565	44	622	40	565	65	919
60	32	502	38	597	42	659	38	597	60	942
66	30	518	37	639	40	691	37	639	58	1002
72	30	565	36	678	40	754	36	678	55	1036
84	28	615	35	769	38	835	35	769	50	1099
96	27	680	34	854	37	930	34	854	45	1130

TABLE OF SPEEDS CC AND V BUCKETS

Pulley Dia. Inches	R.P.M.	Belt F.P.M.
8	85	176
8	170	352
10	85	224
10	170	448
16	55	230
16	100	418
20	55	286
20	85	443
22	55	316
22	80	460
24	42	264
24	80	502
30	42	330
30	80	628
36	42	395
36	80	753
42	40	439
42	70	769
48	40	503
48	65	817
54	40	565
54	65	919
60	40	628
60	60	942
72	40	754
72	55	1036
84	34	748
84	50	1099
96	30	754
96	45	1130

The table of speeds chart is for reference and does not necessarily mean that the buckets will discharge perfectly running at all speeds in this range.

PHONE (785) 827-4491
FAX (785) 827-4494

GRAIN BELT SUPPLY CO., INC.
SALINA, KANSAS

U.S. 1-800-255-2742
1-800-432-8292
1-800-447-0522

