

SCALES

Portable Bulk Scale



Grain Belt portable bulk scales are versatile — these units handle a wide variety of industrial and feed mill weighing and transferring operations. They give you fast, accurate, on-the-spot weight.

SPECIFICATIONS

Model Designation	Model "S"
DIMENSIONS	
Floor Clearance	13 ¹ / ₄ "
Height Floor to Top of Beam	51 ¹ / ₂ "
Height of Hopper	41 ¹ / ₂ "
Height of Hopper Front	30 ³ / ₄ "
Length of Hopper	48"
Width of Hopper & Unit	31"
Front Wheels	10" × 2 ¹ / ₂ "
Caster Wheels	6" × 2"
CAPACITY OF SCALE	1000 lbs.
APPROXIMATE CAPACITIES	
Volume	18 cu. ft.
Shelled Corn	800 lbs.
Pulverized Oats	500 lbs.
Average Material	630 lbs.
APPROX. SHIPPING WEIGHT	400 lbs.

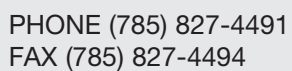
PHONE (785) 827-4491
FAX (785) 827-4494

GRAIN BELT SUPPLY CO., INC.
SALINA, KANSAS

U.S. 1-800-255-2742
1-800-432-8292
1-800-447-0522



Parts List for Weigh Buggy Scale



U.S. 1-800-255-2742
1-800-432-8292
1-800-447-0522



SCALES

Parts List for Weigh Buggy Scale

Ref.	Description	Part #	No. Req.	Ref.	Description	Part #	No. Req.
1	Frame Assembly	F796	1	51	Pivot	F594-28	1
3	Pin, Corner Loop	F495	4	52	Plate, Anti-friction	XSR10	2
4	Loop Assembly, Front Corner	F482	2	53	Link, Beam Connector	F594-14	1
5	Loop, Front Corner	F482-1	2	55	Stand, Sub-assembly	F594-12	1
6	Bearing, Corner Loop	F575	4	56	Plate, Anti-friction	F594-17	2
	Pin, Roll 5/32 x 1/2 lg	106.1620	8		Screw, Mach., , #8 x 32 x 3/8 lg	102.1524	4
7	Loop Assembly, Rear Corner	F492	2		Screw, Cap, Hex 5/16 x 18 x 1 1/4 lg	103.1642	1
8	Loop, Rear Corner	F492-1	2		Nut, Hex 5/16-18	100.0700	1
9	Lever Assembly, Short	F797	1		Washer, Lock, Med. 5/16	104.2501	1
10	Pivot	F452P	8		Pin, Groove, Type 4, 3/16 x 3/4 lg	106.1831	2
11	Pivot	F487P	2	58	Stand, Trig	F594-16	1
12	Lever Assembly, Long	F798	1	59	Trig	F594-13	1
13	Nose Iron Assembly	F799	1		Pin, Roll 1/4 x 2 lg	106.2281	1
14	Nose Iron	F799-1	1		Screw, Cap, Hex 5/16 - 18 x 1 lg	103.1634	1
15	Pivot	F489P	1		Nut, Hex 5/16 x 18NC	100.0700	1
16	Plate, Anti-friction	F800	2		Washer, Lock, Med 5/16	104.2501	1
17	Screw, Adjusting	F801	1	60	Screw, 5/16 x 18NC x 1 lg	103.1634	1
	Nut, Hex 1/4 x 20NC	100.0605	3		Washer, Lock, Med 5/16	104.2501	1
	Washer, Plain, Heavy, 1/4	104.2307	2	68	Beam Assembly, 100 LB x 1 LB	F594SA	1
	Lock Washer, Med, 1/4	104.2305	1		Beam Assembly, 1000 LB x 100 LB	F594SA	1
18	Loop	F802	3	69	Stop, Poise	F594-9	1
19	Bearing	F494	6		Screw, Mach, FilHd #4 x 40 x 5/16lg	102.0521	1
	Pin, Roll 5/32 x 1/2 lg	106.1620	12	70	Pivot	F594-29	1
20	Link, Center Connector, Upper	F481-1	1	75	Weight, Balance	F594-7	1
21	Link, Center Connector, Lower	F481-1	1	77	Bracket	F594-5	1
	Pin, Cotter, 3/16 x 1 1/4 lg	106.1850	1	78	Stem	F594-6	1
22	Platform Assembly	F803	1	81	Weight, Back Balance	F594-10	1
23	Bearing, Platform Assembly	F496	4	82	Rod, Guide	F594-8	1
24	Stud, Bearing	F497	4		Nut, Hex #5 x 40NC	100.0150	2
	Pin, Roll 5/16 x 1 1/2 lg	106.2451	4		Screw, Mach, PanHd #8 x 32 x 3/8	102.1524	2
25	Shim, Platform	F498	AR		Pin, Roll 1/8 x 1/2 lg	106.1220	1
26	Hook	F804	2	89A	Level	F811	1
	Nut, Jam, Hex 5/16 x 18NC	100.0701	2		Adhesive	AR	
27	Cover Assembly, Platform	F805	1	95	Poise Assembly, Main	F594-3	1
28	Wheel, 5" Dia.	F596	4	96	Poise Assembly, Fractional	F594-4	1
29	Axle	F597	2	97	Plate, Anti-friction	XSR15	4
	Washer, Plain, Heavy, 5/8	104.3503	4	98	Pivot	F594-27	2
	Pin, Cotter, 1/8 x 1 lg	106.1241	4				
30	Pillar	F806	1				
31	Rod, Pillar	F807	2				
	Washer, Plain, 3/8	104.2705	2				
	Nut, Acorn, Hex 3/8-16NC	100.0808	2				
33	Name Plate	F808	1				
	Screw, Drive, Type U, #2 x 1/4 lg	103.0000	2				
34	Cap	F594-11	1				
37	Support, Beam	F594-18	1				
45	Clamp, Loop	F809	1				
46	Rod, Beam Load	F810	1				
47	Lever Assembly, Shelf*	F594-15A	1				
48	Pivot	F594-28	1				
49	Plate, Anti-friction	XSR10	2				
50	Loop Assembly	F493	2				

* 47 Includes Shelf Lever, and 50, 48, 49, 97, and 98

PHONE (785) 827-4491
FAX (785) 827-4494

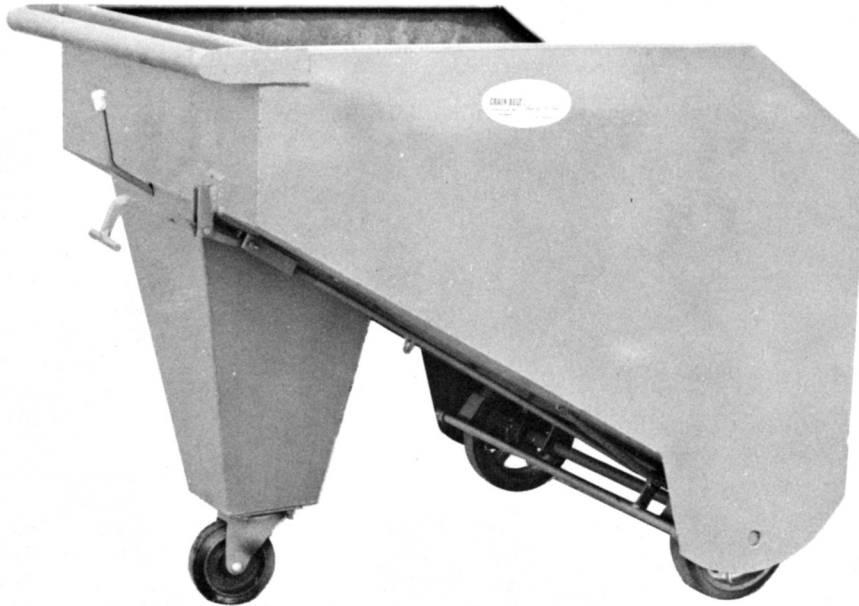
GRAIN BELT SUPPLY CO., INC.
SALINA, KANSAS

U.S. 1-800-255-2742
1-800-432-8292
1-800-447-0522



SCALES

Bulk Tri-buggy



Grain Belt bulk tri-buggy is designed to provide a better, faster and easier way to speed up the handling of bulk grains, feeds, & seeds. The Grain Belt bulk tri-buggy will provide you with a well balanced unit. You can make use of your present scale. Sturdily constructed to give you years of service. Positive wheel brakes. Dump gates mounted in bottom panel at the center. Comes with two molded on rubber wheels and one swivel caster. Four sizes available to meet your specific needs.

SPECIFICATIONS				
Model Designation	Rhode Island	Kansas	Calif.	Texas
DIMENSIONS				
Floor Clearance	1½ in.	1½ in.	1½ in.	2 in.
Length of Hopper	36 in.	36 in.	46 in.	54 in.
Width	24 in.	30 in.	32 in.	34 in.
Height	38 in.	38 in.	38 in.	44 in.
Height in Front	32 in.	32 in.	32 in.	36 in.
Front Wheels	10" × 2½"	10" × 2½"	10" × 2½"	10" × 2½"
Caster Wheel	6" × 2"	6" × 2"	6" × 2"	6" × 2"
APPROX. CAPACITIES				
Volume	12 cu. ft.	15 cu. ft.	19 cu. ft.	24 cu. ft.
Shelled Corn	475 lbs.	675 lbs.	875 lbs.	1200 lbs.
Pulverized Oats	300 lbs.	425 lbs.	550 lbs.	750 lbs.
Average Material	380 lbs.	550 lbs.	700 lbs.	960 lbs.
SHIPPING WEIGHT	180 lbs.	200 lbs.	240 lbs.	280 lbs.

PHONE (785) 827-4491
FAX (785) 827-4494

GRAIN BELT SUPPLY CO., INC.
SALINA, KANSAS

U.S. 1-800-255-2742
1-800-432-8292
1-800-447-0522



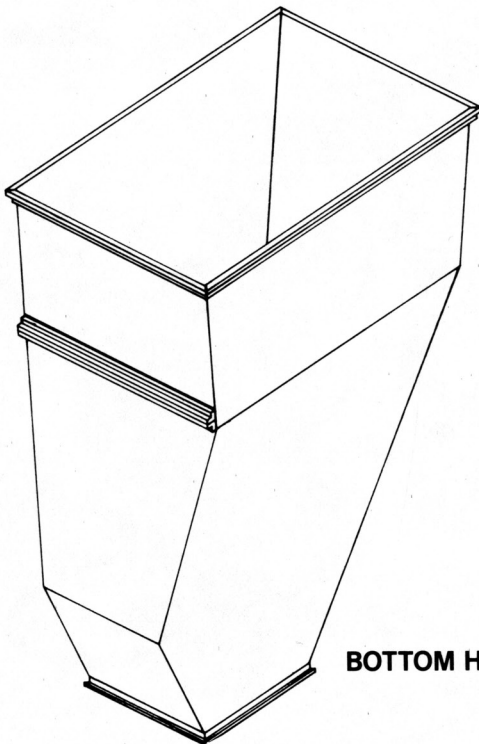
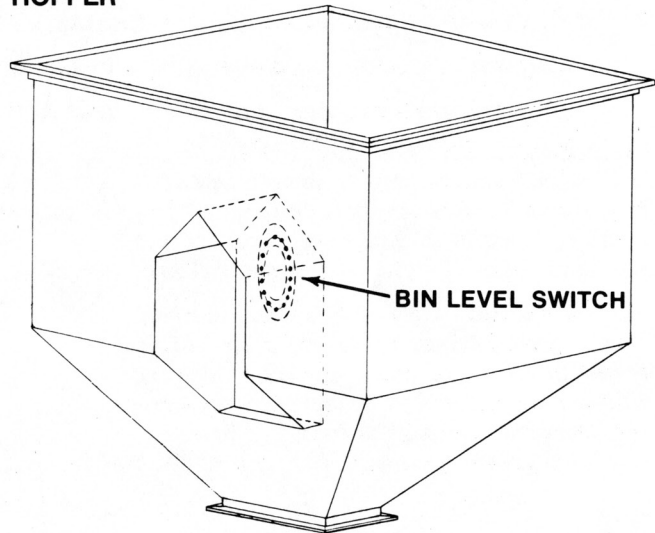
SCALES

Grain Belt Scale Hoppers

UPPER SCALE HOPPER

Capacity	Gauge
10 Bu.	14 Ga.
15 Bu.	12 Ga.
25 Bu.	10 Ga.

TOP HOPPER



BOTTOM HOPPER

LOWER SCALE HOPPER

Capacity	Gauge
10 Bu.	14 Ga.
15 Bu.	12 Ga.
25 Bu.	10 Ga.

PHONE (785) 827-4491
FAX (785) 827-4494

GRAIN BELT SUPPLY CO., INC.
SALINA, KANSAS

U.S. 1-800-255-2742
1-800-432-8292
1-800-447-0522



SCALES

Gross Bagging Scales

for efficient, low cost bagging of Industrial and Agricultural Products . . .

- ☐ *Simplicity of operation.* ☐ *10 gauge construction.*
- ☐ *Choice of stainless or Teflon Coated.* ☐ *Capacity to 150 pounds (68 kilos).*
- ☐ *Kilogram or pound weighments.* ☐ *Counter and microswitch options.*
- ☐ *Air operated, quick change and dust tight units available.*

GENERAL INFORMATION

GB series baggers provide simple, accurate bagging and weighing of a wide range of products and accomodate a wide range of bag size and types — cloth, paper or plastic.

Each scale is test run with a granular product and the 5:1 ratio calibrated beam is fully tested to insure accuracy within ± 4 ounces, whether the scale is to be bin, belt or screw fed. Operators can jog the feed gate handle to gain even greater accuracy.

SCALE OPERATION

Bags are suspended on the spout and held in place by two rubber covered bag grips. A simple turn or two of the Bag Tare Weight re-zeroes the scale and the bag is ready to fill.

Filling begins when the operator pulls the feed gate handle forward into set position and continues until the 5:1 beam raises, automatically tripping and closing the feed gate, thus stopping product flow. Raising the bag release handle drops the filled bag from the scale spout.

GB-32

The basic scale. Built of heavy 10 gauge mild or stainless steel platework the GB-32 is designed to handle a wide range of products from granular feed through grass seed at 4 to 8 bags per minute. Equipped with a spout of 32" circumference, the scale easily handles large mouth bags. This scale may be mounted to conventional bins, screw feed augers or belt fed.

STANDARD FEATURES

- ☐ Automatic cutoff.
- ☐ 5:1 calibrated beam.
- ☐ Quick release bagholders.
- ☐ Weight indicator and pointer.
- ☐ Adjustable flow control.
- ☐ Built-in mounting system.

OPTIONS

- ☐ Microswitch.
- ☐ Automatic counter.
- ☐ Quick change spout.
- ☐ Stainless steel platework.
- ☐ Teflon coated.

GB-25

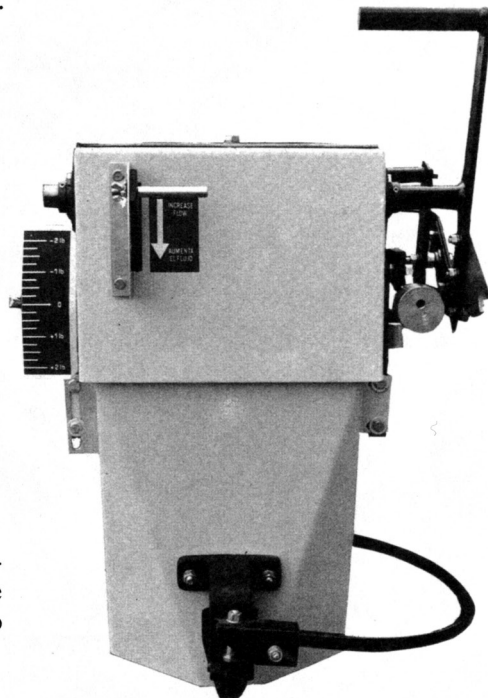
The small spout version of the GB-32. Suited for high density products which use a smaller mouth bag. Operation is identical to the GB-32—automatic shutoff, adjustable flow control and accuracy to ± 4 ounces.

STANDARD FEATURES

- ☐ 25" circumference spout.
- ☐ 5:1 calibrated beam.
- ☐ Quick release bagholders.
- ☐ Weight indicator and pointer.
- ☐ Adjustable flow control.
- ☐ Built-in mounting system.

OPTIONS

- ☐ Microswitch.
- ☐ Automatic counter.
- ☐ Quick change spout.
- ☐ Stainless steel platework.
- ☐ Teflon coated.



PHONE (785) 827-4491
FAX (785) 827-4494

GRAIN BELT SUPPLY CO., INC.
SALINA, KANSAS

U.S. 1-800-255-2742
1-800-432-8292
1-800-447-0522



SCALES

Stroke Counters

Model CS

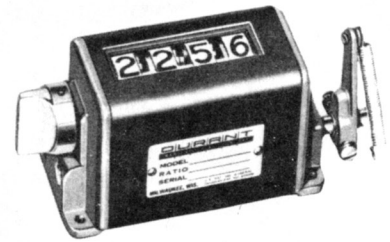
This line of small, compact, top reading stroke counters is designed for use in most industrial applications. CS counters are ruggedly built and feature a single casting case, which assures great rigidity and a tight seal for working parts.

SPECIFICATIONS

Figures: 4 or 5
 Speed: 600 counts per minute
 Stroke Operation: 37-1/2° min.; 75° max.
 Shaft: 1/4" dia. stainless steel
 Drive: Accurately machined, hardened steel parts

Bearings:
 Figure Size:
 Reset:
 Operating Lever:

Oil-less, maintenance free
 11/32" high, black on white
 Contoured wing nut
 Cast zinc. Adjustable to any position.



Model X

A dust- and rust-resistant series of counters for light and medium-duty work. They are sound and durable, requiring a minimum of driving effort, and have been especially designed for incorporation as integral parts of a variety of machines and equipment.

SPECIFICATIONS

Figures: 4 or 5
 Speed: 1000 counts per minute
 Shaft: 1/8" dia. stainless steel
 Drive: Drive parts of nylon
 Bearings: Oil-less, maintenance free

Stroke Operation:
 Figure Size:
 Reset:

33° min.; 58° max.
 3/16" high, white on black
 Knob. Non-reset models available on special order.



Model N-1

A double-deck stroke counter with top and bottom rows counting simultaneously. Bottom row is a totalizer and cannot be reset. Upper row shows a record of current run and can be reset with wing nut. Tumbler-lock or quick-lever reset available.

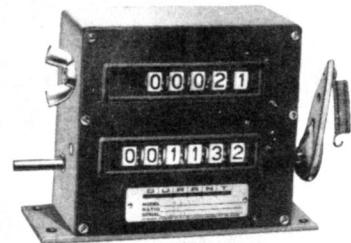
SPECIFICATIONS

Figures: Top deck—5
 Bottom deck—6
 Speed: 800 counts per minute
 Stroke Operation: 45° min.; 71° max.
 Shafts: 5/16" dia. stainless steel
 Drive: Accurately machined, hardened steel parts

Reset:
 Operating Lever:

Figure Size:

Wing nut standard on top; reset can be added to totalizer by special order. Adjustable to any position at either end of drive shaft. Strokes forward. Furnished complete with pull string. 11/32" high, black on white



PHONE (785) 827-4491
 FAX (785) 827-4494

GRAIN BELT SUPPLY CO., INC.
 SALINA, KANSAS

U.S. 1-800-255-2742
 1-800-432-8292
 1-800-447-0522



SECTION F

SCALES

Scale Tickets

- **NO SNAGGING OR TEARING IN YOUR SCALE**
Smooth Wrap-Around Binding Slides Smoothly in Scale – No Loose Edges to Snag
- **MAKES SHARP — CLEAR — READABLE COPIES**
Only The Best Carbonized, Carbonless & Cushion Materials are Used
- **NO MISSING NUMBERS — NO MISSING TICKETS**
Guaranteed Correct
- **COPIES DETACH CLEANLY**
Perforated Squarely on End of Ticket

THE FOLLOWING TICKETS ARE READY FOR SHIPMENT: For Fairbanks, Howe, Toledo & all similar recording scales.

FOR FAIRBANKS SCALES

12345

Load of _____ Date _____

From _____ To _____

Q _____ lbs. Price _____ per lb.

T _____ lbs. Price _____ per lb.

M _____ lbs. Price _____ per lb.

Net _____ lbs. Weight _____

ACTUAL SIZE $1\frac{1}{4} \times 4\frac{3}{4}$
S101 DUP. — S102 TRIP.

SELLER _____ ACCOUNT _____ 12345

REGISTERED WEIGHT _____

Q _____ lbs. Price _____ per lb.

T _____ lbs. Price _____ per lb.

M _____ lbs. Price _____ per lb.

Net _____ lbs. Weight _____

ACTUAL SIZE $1\frac{1}{4} \times 4\frac{3}{4}$
S402 TRIP.

Load _____ Date _____ 12345

From _____ To _____

Q _____ lbs. Price _____ per lb.

T _____ lbs. Price _____ per lb.

M _____ lbs. Price _____ per lb.

Net _____ lbs. Weight _____

ACTUAL SIZE $1\frac{1}{4} \times 4\frac{3}{4}$
S301 DUP. — S302 TRIP.

Weighted at _____ Date _____ 12345

Net _____ lbs. Price _____ per lb.

Q _____ lbs. Price _____ per lb.

T _____ lbs. Price _____ per lb.

M _____ lbs. Price _____ per lb.

Net _____ lbs. Weight _____

ACTUAL SIZE $1\frac{1}{4} \times 4\frac{3}{4}$
S501 DUP. — S502 TRIP.

FOR HOWE SCALES

12345

DATE _____

SELLER _____

BUYER _____

CAR NO. _____

WEIGHT _____

ACTUAL SIZE $1\frac{1}{4} \times 5\frac{1}{2}$
FORM C2 DUP. — FORM C3 TRIP.

From _____ To _____ 12345

Q _____ lbs. Price _____ per lb.

T _____ lbs. Price _____ per lb.

M _____ lbs. Price _____ per lb.

Net _____ lbs. Weight _____

ACTUAL SIZE $1\frac{1}{4} \times 5\frac{1}{2}$
FORM 5 DUP. — FORM 7 TRIP.

Car No. _____ Date _____ 12345

Material in Car _____

Q _____ lbs. Price _____ per lb.

T _____ lbs. Price _____ per lb.

M _____ lbs. Price _____ per lb.

Net _____ lbs. Weight _____

ACTUAL SIZE $1\frac{1}{4} \times 5\frac{1}{2}$
FORM 2 DUP. — FORM 2 TRIP.

If tickets are for a Stockyard under U.S.D.A. supervision, regulations require tickets be printed with name and address, numbered and in triplicate.

Number 12345

Date _____

Customer's Name _____

Address _____

Commodity _____

Net Gross _____

Net Tare _____

Net Net @ _____ Per lb. Price _____

Shopper _____

Weighter _____

MADE IN U.S.A.

DUPLICATE TICKETS
FORM SJ2114

SIZE $4 \times 6\frac{1}{4}$ (Packed 500 per carton)

The Fairbanks Printomatic Form above is made up with 32 pound ledger back. 16 pound bond top sheets, interleaved with high quality one-time carbon, perforated and pasted flat at right end to snap out.

DUPLICATE TICKETS
FORM SJ2114

TRIPPLICATE TICKETS
FORM SJ2114T

Tickets can be printed to order in any style, any size, and any number of parts.
Minimum quantity specially printed scale tickets is 5000.

047493

DATE _____

WEIGHT AT _____

GROSS _____

TARE _____

NET _____

DELIVER TO _____

FROM _____

DRIVER _____

WEIGHTER _____

RECEIVED BY _____

HB1 Trip.
Size $4 \times 6\frac{1}{4}$
(500 to carton)

The Howe Beam scale ticket above is stocked in triplicate sets, using carbonless papers and tag back.

PHONE (785) 827-4491
FAX (785) 827-4494

GRAIN BELT SUPPLY CO., INC.
SALINA, KANSAS

U.S. 1-800-255-2742
1-800-432-8292
1-800-447-0522



SCALES

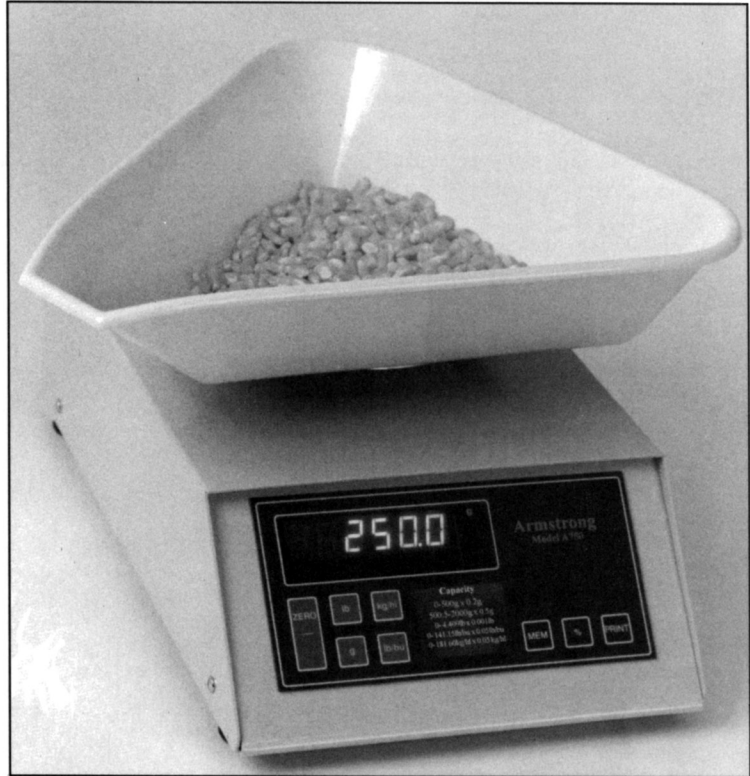
Armstrong A750 Grain Dockage Scale

The Armstrong A750 combines generations of experience in the grain trade with high technology electronics. Weighing grain samples, test weight and percentages of F.M. dockage or damage have never been faster or more convenient. The A750 is designed for years of accurate, reliable service.

- Rugged and accurate design
- Clean, compact and easy to use
- Sealed sensitive control panel
- Bidirectional RS-232 data interface for printers or computers – Includes time/date with battery back-up
- Weighs in g, lb, lb/bu or kg/hl test weight
- Computes % for F.M., dockage, damage, etc.
- American design and manufacture
- NTEP Approved

Applications

Grain elevators: buying and selling
Farm supply distributors
Quality control laboratories and
production requirements

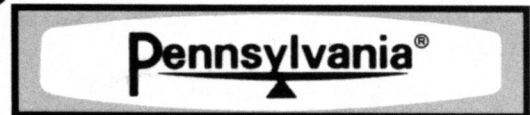


SPECIFICATIONS

- 0-500 x 0.2 AND 500.5-2000 x 0.5 g
- 0-4,409 x 0.001 lb
- 0-141.15 x 0.05 lb/bu
- 0-181.6 x 0.05 kg/hl
- Platform: 6" stainless steel
- LED indicators for MEMory, RECALL, %, Zero and g, lb, lb/bu, kg/hl
- Weight display: 0.56" bright green LED
- Overall size: 8" (W) x 14" (L) x 5½" (H)
- Quick disconnect AC power line cord
- 9 pin din connector for RS-232
- Power: 115 VAC+/- 15%; 50/60 Hz; 15 W
- EMI/RFI filtering and transient protection standard

WARRANTY

The A750 scale carries a 2-year warranty against defects in materials and workmanship subject to Pennsylvania Scale's terms and conditions of their standard warranty.



Precision Weighing Since 1908

Specifications subject to change without notice

PHONE (785) 827-4491
FAX (785) 827-4494

GRAIN BELT SUPPLY CO., INC.
SALINA, KANSAS

U.S. 1-800-255-2742
1-800-432-8292
1-800-447-0522

